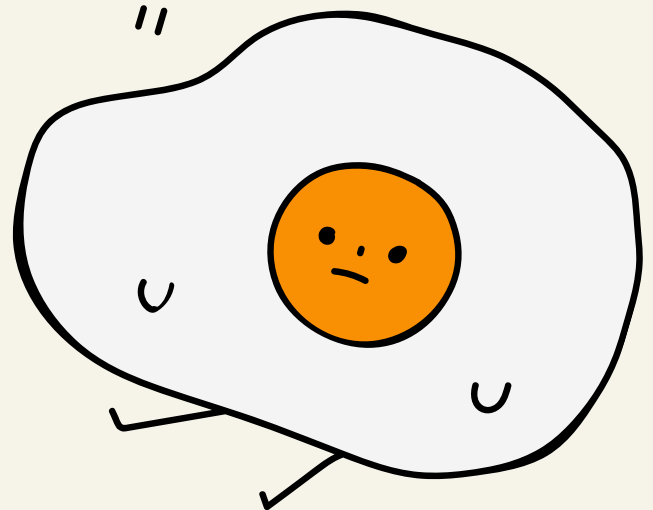
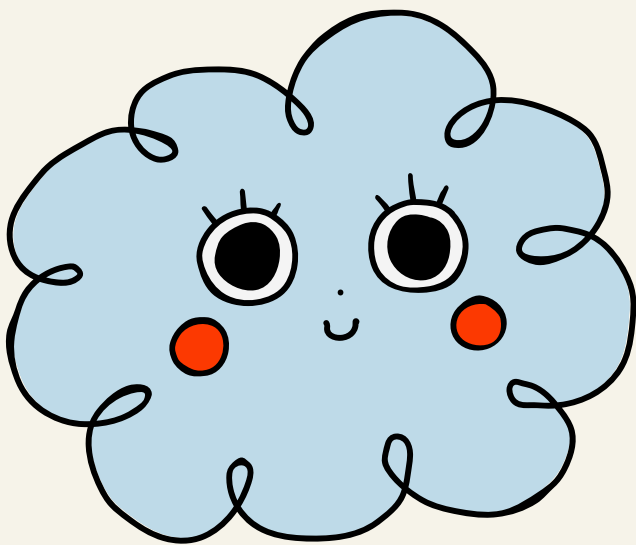
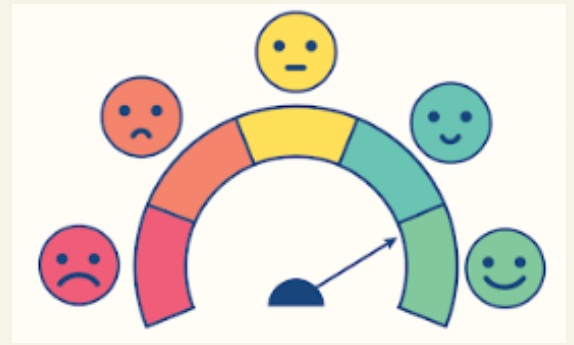


Shacklewell

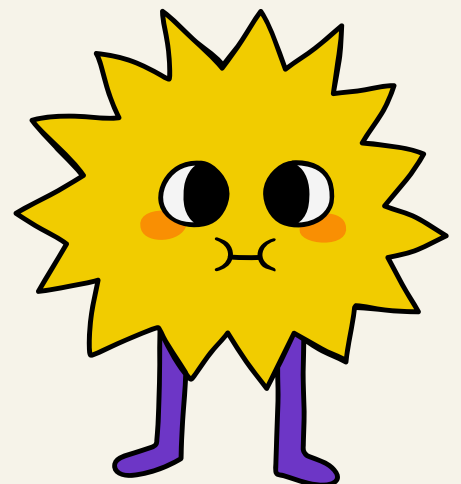
Inclusion Workshop

Emotional Regulation Coffee Morning

Monday 10th November
9.00am - School Library



Please come along and join our coffee morning, it will be an opportunity to build a better understanding of emotional regulation, what drives behaviour and what you as a parent/carer can do to help.



With: Vana Lamprogianni - WAMHS Worker
Patrick Middleburg - SENDCo